

GROUPER AND NAPOLEON WRASSE ECOLOGY IN LAAMU ATOLL, REPUBLIC OF MALDIVES: PART 3. FISHING EFFECTS AND MANAGEMENT OF THE LIVE FISH FOOD TRADE

BY

ROBERT D. SLUKA¹

ABSTRACT

The live fish food industry has recently developed in the Republic of Maldives targeting grouper (Pisces: Serranidae) for export to Asian markets. This study uses data collected in one central and one southern Maldivian atoll with the purpose of examining the influence of fishing on these grouper assemblages. Abundance of five grouper species targeted by the live fish food industry and the Napoleon wrasse (*Cheilinus undulatus*), a targeted species in other countries but banned from export in Maldives, was estimated using timed transects in channel habitats of Laamu Atoll. One site in Kaafu Atoll was resurveyed using the same methods as a previous study four years previously.

Relative grouper abundance was significantly different among channels that experienced different fishing pressure. Channels which had been more intensely fished had lower *Plectropomus areolatus* and *P. laevis* abundance than more lightly fished channels. One site surveyed in 1993 and 1997 showed clear effects of intense fishing pressure. Grouper species composition changed over this time period with targeted species being less abundant in 1997 than 1993. The overall size distribution shifted towards smaller sizes in 1997. Density between the two years was not different, indicating a second-order effect where smaller, non-targeted grouper species increase in abundance once larger species are removed.

Fishing pressure on grouper continues to increase in Maldives and many sites show signs of local over-fishing. It is suggested that protecting spawning aggregations within a system of marine fishery reserves and managing non-protected areas through other measures such as export quotas could result in a sustainable grouper fishery.

INTRODUCTION

The most recent fishery to severely threaten grouper populations is the live fish food trade. Grouper are caught throughout the Indo-Pacific and shipped live to Hong Kong as well as other southeast Asian countries such as Singapore and China. The purchase of high-priced fish is a show of wealth and status in many Asian cultures. Once the grouper populations near Hong Kong were depleted, fishing fleets of small boats set out for the Philippines. Fish buyers from Hong Kong and Singapore now consider the Philippines to be nearly depleted as a source of grouper, due to the low number of individuals available for harvest (Johannes and Riepen 1995). These same buyers

¹ Oceanographic Society of Maldives, P.O. Box 2075, Male' Republic of Maldives
Current address: Center for Applied Science, Millenium Relief & Development Services, PHRA No. 12,
Potujanam Road, Trivandrum, Kerala 695011 India

estimated that Indonesia had 3-4 more years before it was depleted as a source for grouper. Fishing effort for grouper has intensified, including using larger vessels and fishing farther abroad from the Maldives to the west and east to many of the Pacific island nations.

There can be considerable environmental damage done by fish collectors. In many countries cyanide is used to collect groupers. This poison stuns large fish, but kills both corals and smaller fish (Johannes and Riepen 1995). Restrictions have been established in many countries, but generally too late and with little enforcement. Given appropriate management, live fish food fishing can be an important sustainable source of income. However, lack of management and the insatiable demand for live grouper has resulted in the over-fishing of many grouper populations in the Indo-Pacific (Johannes and Riepen 1995).

Maldivians have traditionally relied most heavily on pelagic resources for food and economic livelihood. However, subsistence-level reef-fish fishing has always occurred, especially in atolls which are far from good tuna fishing spots. During bad weather or special times of the year (e.g. fasting month) reef fish constitute the main source of protein for the islanders. In recent years, the demand for reef fish resources by the tourist industry (e.g. lobster, reef fish) and outside markets (e.g. Napoleon wrasse, giant clams, sea cucumbers, groupers) has resulted in the commercialization of reef fish fisheries (Maniku 1994). This brings about intense pressure on reef resources due to the high price paid by those external to Maldives. For example, in Laamu atoll, the beach-side price for tuna in 1998 was 3.5 rf per kilogram (11.72 rf = 1 US dollar) while it was 300 rf per kilogram of dried sea cucumber. This provides great incentive to switch to these non-traditional sources of income. These developing fisheries pose two main threats: 1) over exploitation of the resources and 2) conflicts with other user groups (Shakeel and Ahmed 1996). The main user group conflict is with tourist resorts which rely on diving to attract many of their customers.

The most recent of these non-traditional reef-fish fisheries is the live grouper trade. The fishery for grouper started about January 1993 (Shakeel 1994a). Grouper export rose from 200 t in 1994 to 1000 t in 1995 (Shakeel and Ahmed 1996). Exports for 1996 were expected to show about a 10 fold increase above the 1995 level (Mohammed Shiham Adam, Marine Research Section, Ministry of Fisheries and Agriculture, pers. comm.). There are at least 41 species of grouper known from Maldivian waters (Randall and Anderson 1993, Adam et al. 1998, Anderson et al. 1998). However, only a few of these are targeted commercially. In Laamu Atoll, for example, the highest prices are paid for the *Plectropomus* species, *Epinephelus fuscoguttatus* and *E. polyphemadion* (Sluka pers. obs.). *Cephalopholis* spp, *Anyperodon luecogrammicus*, and *Aethaloperca rogae* may fetch one fifth to one tenth of the price of the former species. In fact, the *Cephalopholis* species have been used to feed the more expensive species as the exporters did not think it worthwhile to use up hold space on these less expensive species. They continued to buy the *Cephalopholis* spp. from fishermen, but cut them up for food. The hold of one vessel (14 ton capacity) was filled with *E. fuscoguttatus* and *Plectropomus* spp. only (Sluka pers. obs.). The fishery is already showing signs of over-fishing. Collectors have shifted away from atolls close to Male' and now have collection sites in all atolls (Mohammed Haleem, Oceanographic Society of Maldives, pers. comm.).

Grouper are collected using small rowboats (1-2 people), sailing vessels (3-4), or large mechanized boats (7-8) (Shakeel 1994a,b). Sailing vessels may catch 50-80 fish per day, while mechanized boats, 100-170 (Shakeel 1994a). The fishermen use snorkeling gear and handline directly from the water. In this manner, they can identify individuals they would like to catch and pursue. The preferred bait is the goldband fusilier (*Pterocaesio chrysozona*). A hook is placed through the rear of the fusilier so that it remains alive and swimming, thus attracting grouper. The daily catch of fishermen are then either placed in their own small cages or directly brought to the collector's large cage facility. Shakeel (1994a) estimated a 5-20% mortality rate in boat holds. This is due to poor water quality in holds, overcrowding, and damage to the fish during processing. A number of fish die due to the hook being swallowed resulting in internal bleeding. Another source of mortality is the rapid expansion of the swim bladder due to the fish being pulled rapidly to the surface. The fishermen release the air from the bladder with a sharp tool, but may pierce too deeply resulting in internal bleeding.

Grouper are bought from the fishermen by a local collector who acts as a middleman with the foreign exporter (usually from Hong Kong). The price paid to the fisherman depends upon demand (how imminent is the arrival of the foreign collector vessel and what the mortality of fish in cages has been), species, and size. These different groups of fish are held separately in cages approximately 4 x 3 x 2.5 (depth) m in measurement. These cages are generally supported by a framework of metal piping and held afloat by empty plastic fuel barrels. Mortality in cages can be quite high, up to 30% for the *Plectropomus* spp. (Mohammed Afeef, grouper exporter pers. comm.). The fish are then transferred to a foreign collector vessel at which time the Maldivian intermediary receives monetary compensation.

Shakeel (1994a,b) estimated the maximum sustainable yield of grouper for each Maldivian atoll which totalled to 1,800 t. For Laamu Atoll, Shakeel (1994a) estimated the maximum sustainable yield of groupers from shallow coral reefs at 27 tons per year. The foreign collection vessels have holds of approximately 14-16 ton capacity. These vessels may collect from more than one atoll, depending on where the Maldivian intermediary has his collection bases. One vessel collected approximately 7-8 tons of grouper on one trip to Laamu Atoll (Sluka, pers. obs.). Another vessel was already on its way to collect the remaining fish in cages and vessels were expected at least every 6-8 weeks. If we assume that 1-2 collection trips occur every 6-8 weeks, then 42-139 tons would be collected per year. In 1994, fishermen were already reporting that their catches were declining, especially in Alifu and Vaavu Atolls (Shakeel 1994a). Shakeel and Ahmed (1996) concluded that based on export figures for all Maldives combined (1000 t) and the mortality rate in fishermen's and exporter's holding facilities, that the maximum sustainable yield for grouper was likely surpassed in 1995.

The purpose of this paper is to review the nature of the Maldivian grouper fishery and use data collected under different fishing intensities and durations of fishing pressure to examine the impact of this fishery on grouper assemblages.

METHODS

Abundance surveys

Grouper abundance (no. fish 10 minute⁻¹) was determined for six of the seven channels (see Figure 1 in Part 2 of Sluka 2001a) leading from the inner atoll lagoon to the open ocean, at least once, using the same methodology detailed in Part 2 of this series (Sluka 2001a). Briefly, eighteen 10-minute surveys with a transect width of 10 m were conducted in each sampling session. Mundoo Channel was surveyed nine times between April-June, 1998 while Vadinolhu and Fushi channels were surveyed twice during this same time period (Table 1). The other three channels were surveyed once. A one-way ANOVA was used to test for significant differences in fish abundance among the six channels for each targeted species. A percent similarity index was calculated among all six channels using the abundance of the five targeted grouper species (*Epinephelus fuscoguttatus*, *E. polyphkadion*, *Plectropomus areolatus*, *P. laevis*, and *P. pessuliferus*) and the Napoleon wrasse (*Cheilinus undulatus*). This matrix was used in unweighted, group-average linkage clustering to examine which channels were most similar with regards to targeted species abundance.

Resurvey of sampling site in Kaafu Atoll

Sluka and Reichenbach (1996) reported the results of sampling Gaagandu reef slope for grouper density, diversity, and average size. Gaagandu is a small island near the capitol of Maldives, Male' in Kaafu Atoll, approximately 210 km north of Laamu Atoll. Data were collected in June and July, 1993. This represents the time period when the grouper fishery started in Maldives. Sluka and Reichenbach (1996) showed that fifteen 240 m² would capture about 80% of the grouper species diversity and achieve a precision around the median density of about 10%. Thus, sixteen 240 m² transects were surveyed at Gaagandu reef slope in March, 1997 to examine the impact of almost four years of fishing on grouper diversity, density, and size distribution. A 20 m transect line was laid haphazardly along one depth gradient. The transect was searched for groupers using a zig-zag swimming pattern, searching in all caves, crevices and holes (GBRMPA 1978). A width of 6 m was visually estimated out from each side of the transect line. The number and size (nearest 5 cm) of each individual within transect boundaries was recorded. The total number of grouper observed per transect was compared between the two sampling dates using a t-test. Fish sizes were placed in one of five categories, to match data in Sluka and Reichenbach (1996): < 5 cm, 6-15 cm, 16-25 cm, 26-35 cm, and > 35 cm total length. A Chi-square test was used to test for significant differences in the size distribution between sampling dates.

RESULTS

Abundance surveys

There was no significant difference in abundance among channels for any species ($p > 0.05$) except *Plectropomus areolatus* ($n=282$, $F_{6,275}=2.2$, $p < 0.05$) and *P. laevis* ($n=282$, $F_{6,275}=4.8$, $p < 0.001$) (Figure 1). The Tukey test for *P. areolatus* was inconclusive, but the test for *P. laevis* showed that it was more abundant in Mundoo Channel than Gaadhoo Channel or one of the sampling dates in Vadinolhu Channel,

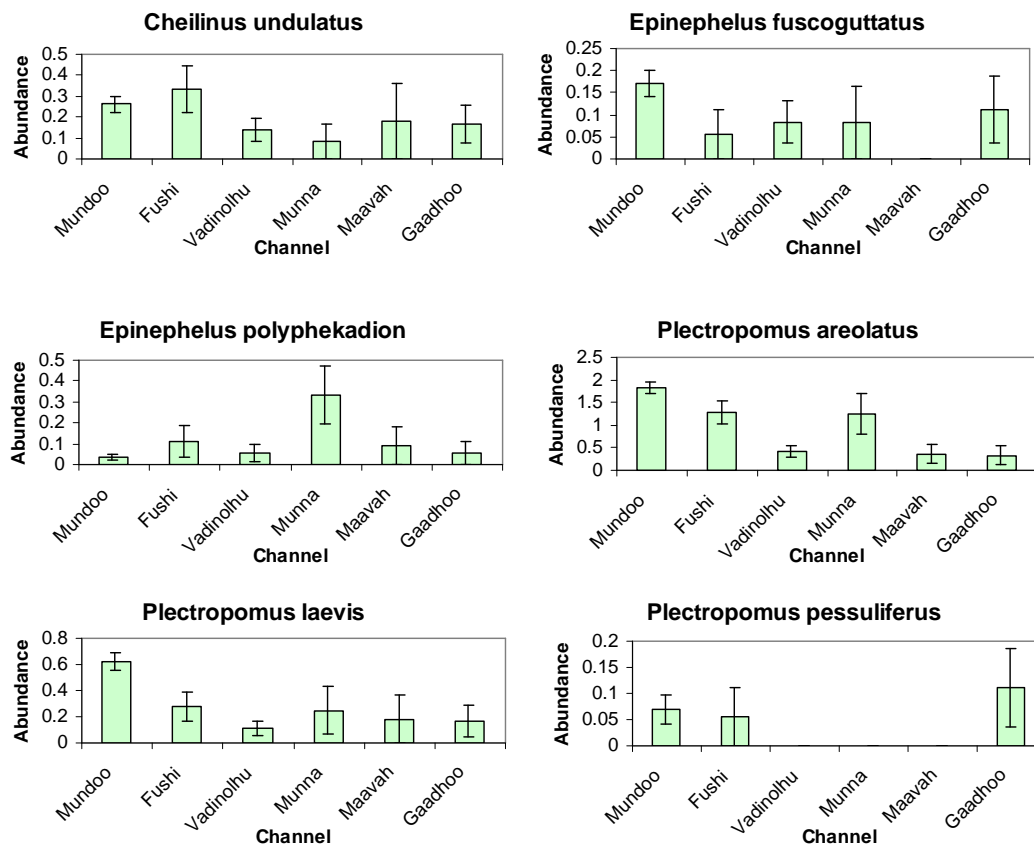


Figure 1: Mean abundance \pm 1 SE (no. fish 10-min⁻¹) of target species in all channels

but similar amongst all other channels. Figure 2 shows that channels clustered into two groups: Fushi, Munnafushi, and Mundoo channels were most similar as well as Gaadhoo, Maavah, and Vadinolhu.

In addition to surveying for targeted grouper species, any grouper species was recorded that was present in the channel. This yielded a species list for each channel (Table 1). A total of 18 grouper species were observed in channel habitat in Laamu Atoll.

Resurvey of sampling site in Kaafu Atoll

Mean grouper density (no. 240 m²) was not significantly different between 1993 and 1997 ($t=1.299$, $df=35$, $P>0.05$). The mean density in 1993 (1 SE) was 25.2 (1.5) grouper 240 m², while in 1997, 22.1 (0.5) (Figure 3). The size distribution, however, was significantly shifted towards smaller sizes ($X^2=156.8$, $df=4$, $p<0.001$). Figure 4 shows that there were fewer larger fish, especially greater than 35 cm, in 1997 than in 1993. In 1997 targeted grouper species were rare, with only two *Epinephelus polyphekadion* observed, and no *Plectropomus* spp. These targeted species were not abundant in 1993, but more commonly observed. The species composition was similar, with the aforementioned exception. There were 17 grouper species observed in 1993 and 13 in 1997. However, sample size was much higher in 1993 than 1997, 48 and 16 transects, respectively. When the number of species observed in 1997 is corrected for sample

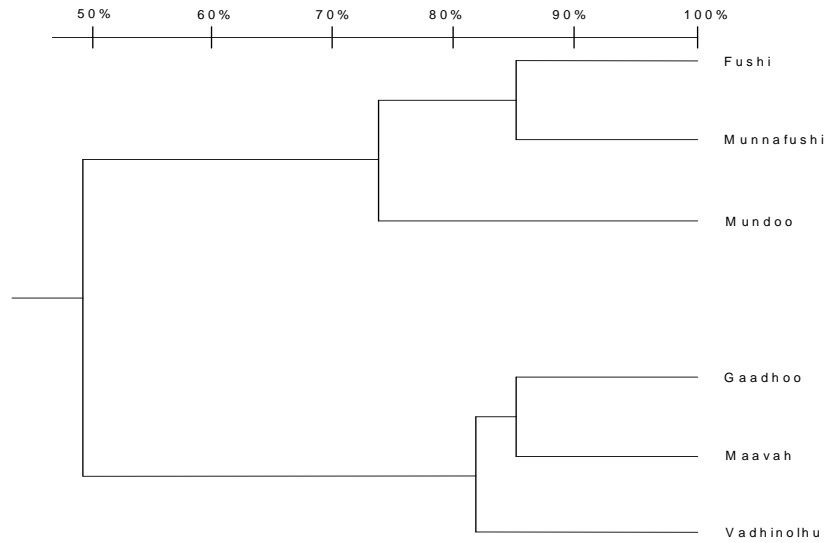


Figure 2: Cluster diagram showing the relationship between all study channels based upon the abundance of targeted species.

Table 1: Grouper species observed in Laamu Atoll channels.

Species	Munday	Fushi	Vadinolhu	Munnafushi	Maavah	Gaadhoo
Date surveyed	3/31-6/19 ¹	4/26, 5/24	4/23, 6/9	6/9	6/10	5/23
<i>Aethaloperca rogae</i>		X	X	X	X	X
<i>Anyperodon leucogrammicus</i>	X	X	X		X	X
<i>Cephalopholis argus</i>	X	X	X		X	X
<i>C. leopardus</i>	X		X			
<i>C. miniata</i>	X	X	X		X	X
<i>C. sexmaculata</i>	X					
<i>C. urodeta</i>	X	X	X	X		X
<i>Epinephelus caeruleopunctatus</i>	X				X	X
<i>E. fasciatus</i>	X					
<i>E. fuscoguttatus</i>	X	X	X	X	X	X
<i>E. polyphkadion</i>	X		X	X		X
<i>E. spilotoceps</i>	X		X			X
<i>E. tauvina</i>	X					
<i>Gracila albomarginata</i>	X	X	X	X	X	X
<i>Plectropomus areolatus</i>	X	X	X	X	X	X
<i>P. laevis</i>	X	X	X	X	X	X
<i>P. pessuliferus</i>	X					
<i>Variola louti</i>	X		X	X	X	X

¹This channel sampled multiple times during this time interval.

size using the graph in Sluka and Reichenbach (1996), 16 species can be assumed to be present in 1997.

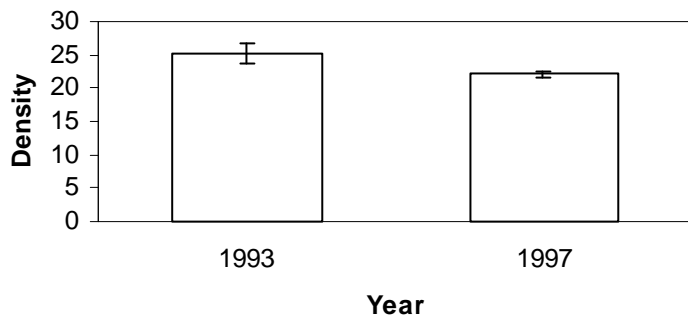


Figure 3: Mean grouper density (all species combined, no. 240 m⁻²) for two separate years at Gaagandu Island, Kaafu Atoll.

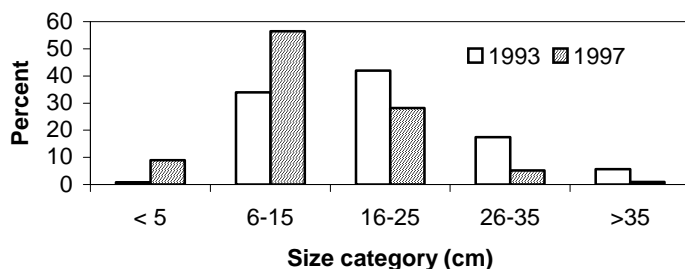


Figure 4: Size-frequency distribution of all grouper species combined for two different years at Gaagandu Island, Kaafu Atoll.

DISCUSSION

Grouper species diversity was similar to a previous study in Laamu Atoll (Sluka 1998). A total of 18 grouper species in seven genera were observed in this study, while 25 species in seven genera were identified by (Sluka 2001b). Both counts are much less than the total number observed for all Maldives of 41 (Randall and Anderson 1993, Adam et al. 1998, Anderson et al. 1998). The main species differences between channels surveyed in this study and the previous study by Sluka in Laamu Atoll was in fewer small, cryptic and rare species. This could be due to lower sampling time or related to habitat differences among channels and other types of reefs. Sluka (2001b) found 19 grouper species on reef slopes on the ocean side of the atoll, 24 on reef slopes inside the atoll rim, 17 on faros, and 3 in lagoonal habitats. Channel habitat grouper diversity was most similar to outer reef slopes and least similar to lagoonal habitats.

Data from all channels indicate two separate groups of channels cluster together: deeper, more intensely fished channels and shallow, less intensely fished channels. While there is currently only one grouper collection site in Laamu Atoll (located on the island of Kashi Guraidhoo, next to Maavah Channel), in the past several years there was another site located near Maamendhoo which is next to Gaadhoo Channel. Grouper fishermen from Laamu and other atolls bring their fish to these sites and sell them to the grouper collectors. According to local villagers, much of the fishing for grouper in the past several years has been conducted on the western side of the atoll which includes the areas around Kashi Guraidhoo and Maamendhoo. Figure 2 shows that *Plectropomus areolatus* and *P. laevis* abundance was lower in these more heavily fished channels than

in less intensely fished channels. Munnafushi Channel (also located on the western side of the atoll) is a shallow channel (approximately 10 m depth) with extremely high current speeds (pers. obs.). These physical differences likely account for less fishing pressure in this channel. These data reinforce the already overwhelming evidence that intensive fishing results in sites with significantly decreased grouper abundance relative to unfished sites (see Sluka 1998 for a review).

Resurvey of sampling site in Kaafu Atoll

It appears that fishing pressure at the site near Gaagandu island has resulted in a shift in species composition and size distribution, but not in mean density. This may indicate compensation, the so-called second order effect shown by other researchers (Bohnsack 1982, Goeden 1982, Watson and Ormond 1994, Sluka et al. 1996, Sluka and Sullivan 1998). When larger grouper species are removed, smaller species become more abundant. This may be due to a reduction in competition or predation, but no experimental evidence is available to suggest the most likely mechanism for this occurrence. Bohnsack (1982) found that graysby were more abundant in sites unprotected from spear-fishing relative to sites protected. Watson and Ormond (1994) found that the relative contribution of smaller *Cephalopholis* spp. was significantly greater in sites unprotected from artisanal fishing versus those protected. Grouper species in an unexploited condition may significantly compete for resources intra- and interspecifically. The release of this competition and/or predation may allow the smaller species to increase in abundance due to the increase in resources available to them. There are no data that I am aware of to suggest that larger grouper species are preying on smaller grouper species (Randall 1967, Randall and Brock 1960, Kingsford 1992). Stomachs contents of *Epinephelus merra* (n=481), *Cephalopholis argus* (n=280), *C. miniata* (n=48), *C. urodeta* (n=71), and *Plectropomus leopardus* (n=7) contained no grouper (Randall and Brock 1960).

The shift in size distribution from larger average size in 1993 to smaller average size in 1997 is likely due to the direct effects of fishing. In 1997 no *Plectropomus* species were observed. These species are among the most highly sought after for the live fish food trade. While these species were not abundant in 1993, they were regularly observed. Data from Sluka and Reichenbach (1996) underestimated the abundance of the *Plectropomus* spp. due to using fixed area transects. These species are highly mobile and are more amenable to sampling using timed counts (Newman et al. 1997). This shift in species composition and size distribution is consistent with shifts observed in other grouper populations subjected to heavy fishing (Russ 1985, Russ and Alcala 1989, Sluka et al. 1997, Sluka and Sullivan 1998).

Effects of fishing on grouper populations

Intensive fishing for grouper results in a population that has different characteristics than an unexploited population. Grouper in fished areas, relative to unfished ones, tend to be smaller in average size, less dense, and collectively produce fewer eggs. There are also significant genetic changes where fishing selectively removes individuals with particular life history features such as large size. Sixteen grouper species were recommended for inclusion in the IUCN Red List of Threatened Animals (Hudson and Mace 1996). Most of these species are the larger groupers, which are the

target of commercial and recreational fisheries. The largest of all grouper species, the giant grouper *Epinephelus lanceolatus*, is included in the proposed list and occurs in Maldives.

The growth and reproductive characteristics of groupers render these species especially susceptible to over-fishing (Shapiro, 1987; Bannerot et al., 1987; Huntsman and Schaaf, 1994). Groupers which are targeted by fishing generally grow slowly to a large maximum size (Manooch, 1987). The removal of larger individuals leaves behind smaller individuals to spawn. Over many generations, this can result in a decrease in the size/age at sexual maturity (Ricker, 1981) and also decrease the average size of the population (Roberts and Polunin, 1991). Fishing pressure can cause genetic shifts in the age/size at first reproduction, growth rate and decrease the genetic variation in the population (Sheridan 1995).

Many grouper species are protogynous hermaphrodites, changing sex from females to males later in life (Shapiro, 1987). Larger groupers are generally males, and at intensive fishing levels, the number of males in the population can be drastically reduced. If too many males are removed, sperm can become limiting for reproduction (Bannerot et al., 1987). If sperm is limiting, protogynous stocks are more vulnerable to over-fishing than gonochoristic stocks (Huntsman and Schaaf, 1994). Species which are protogynous may experience a drastic reduction in reproductive capacity, even at moderate levels of fishing (Huntsman and Schaaf, 1994). In addition to protogyny, the reproductive behavior of groupers may increase their susceptibility to over-fishing.

Many species of grouper aggregate to spawn in one or two months of the year. Grouper spawning aggregations are the focus of commercial, recreational, and artisanal fisheries throughout subtropical and tropical regions of the world (Olsen and LaPlace 1978, Johannes 1988). Groupers appear to be especially susceptible to over-fishing at this time due to 1) behavioral changes rendering them less wary of fishers, 2) fishing of spawners prior to gamete release, 3) selective removal of larger males, potentially resulting in sperm limitation (Bannerot et al. 1987), 4) aggregations returning to the same place at the same time each year, and 5) concentration of populations, thus effectively fishing a very large area as groupers may travel many kilometers to the aggregation. Intense fishing of grouper spawning aggregations has led to decreases in abundance and mean size of individuals as well as strongly female-biased sex ratios (Sadovy 1994, Coleman et al. 1996, Koenig et al 1996). This then results in reduced average fecundity of the population and ultimately, decreased population size, reduced population growth, and extinction (Coleman et al. 1996). Extinction could be economic, too few individuals of a species for a fishery to exist; local, lack of any individuals at a particular site; or complete, lack of any individuals of a species anywhere.

Coleman et al. (1996) have shown that the nature of a grouper species' reproductive behavior influences their susceptibility to fishing pressure. For example, two heavily fished species in the Gulf of Mexico that migrate to spawn in aggregations and have spatially segregated sexes (i.e. males and females live in different places throughout the year) had severely reduced sex ratios. However, in the same location, a species where males and females have access to each other throughout the year and do not aggregate to spawn have not had marked size or sex ratio changes in the past 25-30 years, despite intensive fishing pressure. It is thus imperative to understand the reproductive ecology of the species sought after in the live fish food trade. The two

Epinephelus species studied herein, *E. polyphkadion* and *E. fuscoguttatus*, have been shown to aggregate to spawn in other places (see review by Domeier and Colin 1997). Similarly, Plectropomids have been observed to aggregate for spawning in other studies (Goeden 1978, Johannes 1988, Samoily and Squire 1994). Part 2 of this study (Sluka 2001a) indicates that *Plectropomus areolatus* aggregates to spawn in Maldives, based upon the definition of a three-fold increase in numbers at a spawning site (Samoily 1997). It is not known how the separate sexes are distributed spatially. According to Coleman et al. (1996), if these species were able to judge the population sex ratio throughout the year (i.e. sexes not spatially segregated), intense fishing would not alter population sex ratios. If the only time a female can judge the population sex ratio, and thus determine whether or not to change sex to a male, during the spawning aggregation, then intense fishing pressure would significantly alter population sex ratios. In either case, aggregating species are highly susceptible to local extinctions (Coleman et al. 1996). In some cases, aggregations which were successfully fished artisanally have disappeared due to the increased pressure brought about by gear improvements or outside markets.

Little is known about how many times an individual grouper will travel to an aggregation in one spawning season, nor how far an individual generally swims to arrive at these points. Johannes et al (1995 in Zeller 1997) observed a individual *Epinephelus polyphkadion* in Palau to travel 10 km to an aggregation site. Tagged Nassau grouper (*E. striatus*) have been shown to migrate to spawning aggregations up to 110 km (Colin 1992) and 240 km (Carter et al. 1994) distant in the Bahamas and Belize, respectively. However, Samoily and Squire (1994) found aggregation sites for the grouper *P. leopardus* as close together as 1 km. In addition, both Samoily (1997) and Zeller (1997) found smaller aggregations near to the primary aggregation sites. Thus it is unknown how many aggregation site occur in an atoll. If there is only one site per atoll and this site is heavily fished during the aggregation time, the entire reproductive output for the atoll could be diminished to the point where the population cannot sustain itself and abundance levels fall to the level of being economically extinct. However, recent research by Zeller (1997) suggests that not all sexually mature *Plectropomus leopardus* traveled to spawning aggregation sites. He suggested that if less than a third of the population moves to spawning aggregations during the spawning season that this species may be more resistant to over-fishing than other grouper species.

Management options

The Maldivian grouper fishery is under considerable stress. There is currently fishing for grouper in all atolls. Grouper exporters complain about reduced abundance and smaller individual sizes in some atolls. This study also showed that fishing pressure is negatively influencing the relative abundance of targeted species in Laamu Atoll and that the size distribution and species composition of groupers at one site in Kaafu Atoll has been significantly reduced and altered towards smaller sizes and fewer commercially important individuals. These are classic signs of intense fishing pressure. Adam et al. (1997) noted that the grouper fishery is rapidly expanding and that a pattern has been established of over-fishing one atoll and then moving on to over-fish the next. Clearly, based upon the experience of other countries and the present state of development of the Maldivian grouper fishery, management action is necessary. Research suggests that the

best management strategy for both maintaining grouper fisheries and conserving natural population size, structure and diversity is to protect grouper spawning aggregations within a series of marine protected areas (Sadovy 1994, Turnbull and Samoilys 1997). Sadovy (1994) noted that protecting spawning aggregations alone, may not be sufficient to prevent over-fishing. The management strategy most likely to succeed in both 1) maintaining a population that can sustain substantial fishing pressure and 2) avoiding over-fishing focuses on both the spawning and non-spawning times and areas. Spawning aggregations should be closed to fishing, either by permanently closing these areas to fishing or using temporal closures surrounding the time of spawning. The population should also be managed during non-spawning times using methods such as marine fishery reserves, quotas and/or size limits. Fifteen dive sites have been designated as marine protected areas where fishing activity is banned. However, these sites are small, only located in three atolls, and regulations are not enforced (Adam et al. 1997).

Fisheries management regulations can basically be divided into two categories, controlling the amount of fish caught or the effort used to catch them. Managers throughout the world have used a variety of regulations within these two categories including limiting the total number of grouper caught and the individual or collective weight of an individual fisherman's catch. Effort limitations include restricting gear types, seasonal or spatial closures to fishing, and requiring gear to be less efficient.

Shakeel and Ahmed (1996) made several suggestions for the management of the Maldivian grouper fishery: 1) limiting fishing in each atoll, 2) limiting export, 3) closed areas (but not necessarily permanently closed), 4) size restrictions, 5) improved data collection, and 6) aquaculture.

The potential yield of grouper for each atoll was calculated by Shakeel (1994b). He gives a total maximum sustainable yield for the whole country of 1,800 t, a figure which was likely reached in 1995. The problem with using this method, as pointed out by Shakeel, is that there is a variable and significant grouper mortality before export, no method of collecting species-specific data, and the accuracy of the yield estimate is in question. There is already a problem of fishermen moving to other atolls to catch grouper and this would likely cause more tensions between atolls with low quotas and those with high quotas. Quota systems are a common means of managing grouper fisheries, but appear, based upon the fact of almost universally over-fished grouper populations, to be ineffective as a management system for these species. While theoretically sound, catch quotas are dependent upon detailed biological and catch data as well as efficient enforcement. Practically speaking, quotas are usually surpassed before the statistics are collected which show the quota has been reached.

Export could be stopped once the maximum sustainable yield is reached. However, this method is dependent upon timely and accurate data collection. This method could be rendered ineffective by significant poaching, lack of data, and/or mortality due to catching, handling, or holding procedures (Wilson and Burns 1996, Shakeel 1994a,b).

Limiting the number and/or size of fish collected can easily be rendered ineffective due to significant mortality of undersized fish (Wilson and Burns 1996). Measures such as effort limitation and size limits are unlikely to rehabilitate over-fished grouper stocks (Huntsman and Schaaf 1994). For example, size limitation is complicated by release mortality (Huntsman and Schaaf 1994). Groupers brought up from relatively

deep water (>30 m) suffer injury and likely mortality from the expansion of the swim bladder and other internal air cavities. Wilson and Burns (1996) showed that the survival rate of undersized grouper caught deeper than 44 m was less than 33%. They conclude that this rate is too low for the size limit in place to be effective in increasing yield. Render and Wilson (1996) showed that the mortality rate of snapper brought from 21 m depth to the surface and then released (either with the gas bladder inflated or deflated) was 20%. It appeared that there was a higher, but variable, mortality rate in fish caught deeper than 21 m. They concluded that gas bladder deflation did not significantly reduce mortality and may introduce another source of mortality when not performed properly.

Marine fishery reserves

Coral reef fisheries are usually managed by the limitation of catch and/or effort. However, grouper populations throughout the world have shown drastic changes in their population structure, despite these management measures (Sadovy 1994). One management option that has been proposed to combat over-fishing of coral reef fish stocks is to establish marine fishery reserves (MFRs) (PDT 1990). The Plan Development Team (1990) defined MFRs as "areas permanently closed to consumptive usage". The benefits of MFRs are numerous and include protecting the age structure of the population, maintaining genetic variability, and providing broodstock to replenish other areas. Based on previous experience with MFRs throughout the world, it is expected that MFRs will have similar beneficial effects on any reef fish populations.

Several reviews of the benefits and design of marine fishery reserves have recently been completed (PDT 1990, Roberts and Polunin 1991, Dugan and Davis 1993, Rowley 1994). Marine fishery reserves result in a higher abundance and larger commercial species in the reserve than outside the reserve and protect the spawning stock biomass of these species (Russ et al. 1993).

There are two general means by which reserves benefit local fishermen in terms of increased catch: larval transport and spillover of adults. Little research has been carried out on these two processes. Most coral reef fish have a bi-partite life cycle with relatively sedentary adults and pelagic larvae (Sale 1991). The fecundity of fish is related exponentially to their length, so that a large fish may reproduce hundreds of times as much as a fish half its size (PDT 1990). Adults spawn eggs that are buoyant and float downstream of the prevailing current patterns. These eggs develop and settle in areas that are fished, thus replenishing those populations. While adults are relatively sedentary, a certain percentage of the population will make large scale movements in a short period of time and many of the adults will move distances of several miles throughout their life (PDT 1990). The movement patterns of a porgy (*Coracinus capensis*) in South Africa were studied by tagging and releasing individuals (Attwood and Bennett 1994). Over several years, they found that 17.8% of the tags were returned outside of the reserve. Those found outside of the reserve had moved a minimum of 25 km and a maximum of 1044 km. This is similar to most tagging studies in which most individuals of sedentary-type fish remain in a small area with a few nomads that travel long distances. Through the movement of adults out of the MFR, the yield to fishermen along MFR edges is increased. Sluka et al. (1997) showed that mean Nassau grouper density was higher in the 5 km adjacent to the park than at distances farther from park boundaries.

CONCLUSION

Management of the live grouper trade in Maldives is urgent. Evidence from around the world suggests very strongly that unmanaged or improperly managed grouper fisheries will become over-fished quite quickly. There is already evidence of over-fishing in Maldives, and the fishery is only 4-5 years old. Several management options are available. Scientific evidence suggests that protecting a significant portion of the coastal habitat in marine fishery reserves is the best management option for both the resource and resource users. Reserves designed for grouper management need to protect spawning aggregations. As a prelude to a reserve system, the banning of fishing grouper spawning aggregations would provide the next best strategy for long-term use of the resource. Given the current lack of a detailed data collection system for reef species (Shakeel and Ahmed 1996), it is unlikely that limiting catch or export using maximum sustained yield figures will provide long-term protection for the resource and resource users.

ACKNOWLEDGEMENTS

This study was funded by grants from the Research Fellowship Program of the Wildlife Conservation Society, John G. Shedd Aquarium's Aquatic Science Partnership (funded by the Dr. Scholl Foundation), and the Lerner Gray Fund for Marine Research of the American Museum of Natural History.

I wish to thank my Maldivian partners for their help in this project. My two assistants, Mr. Yoosuf Nishar and Mr. Abudullah Hakeem, assisted in all aspects of the field work and generally assisted in all aspects of my life in Maldives. Mr. Ahmed Shakeel and Ms. Aishath Shaan Shakir of the Oceanographic Society of Maldives facilitated my entry into the country and provided support throughout the duration of the project. Personnel from the Marine Research Section of the Ministry of Fisheries and Agriculture provided information as well as permission to work in Maldives. I would like to especially thank from MRS the deputy director Mr. Ahmed Hafiz, Mr. Hassan Shakeel, Dr. Charles Anderson, and Mr. Ibrahim Nadheeh. I would also like to thank Mr. Mohamed Haneef and Mr. Mohamed Afeef of Seacom Maldives Pte. Ltd. for providing information and access to their grouper holding facilities in Laamu Atoll. Mr. Mohamed Zahir of Ecocare Maldives provided information on the Maldives environment. Conversations with Mr. Mohamed Haleem of the Oceanographic Society of Maldives were also very helpful in understanding both Maldivian culture and the environment. Dr. Norman Reichenbach, formerly of the Oceanographic Society of Maldives, helped in every way to make this project possible and provided companionship at OSM's laboratory. Dr. Yvonne Sadovy of the University of Hong Kong provided me with important literature that made this document more complete. Mr. Robb Wright of The Nature Conservancy's Florida and Caribbean Marine Conservation Science Center provided technical assistance with map making.

I would like to thank the villagers of Thundi, Gamu Island, Laamu Atoll for accepting me into their community and providing help and hospitality throughout the year. My friends there are too many to mention by name. I would like to especially thank the most wonderful wife a guy could ever have, Cindy. She supported me

throughout this study.

REFERENCES

- Adam, M.S., R.C. Anderson, and H. Shakeel
 1997. Commercial exploitation of reef resources: examples of sustainable and non-sustainable utilization from the Maldives. *Proceedings of the 8th International Coral Reef Symposium* 2:2015-2020.
- Adam, M.S., N.R. Merrett, and R.C. Anderson
 1998. Additions to fish fauna of the Maldiv Islands. Part 1: An annotated checklist of the deep demersal fishes of the Maldiv Islands. *Ichthyological Bulletin of the J.L.B Smith Institute of Ichthyology* 67:1-19.
- Anderson, R.C., J.E. Randall, and R.H. Kuiter
 1998. Additions to fish fauna of the Maldiv Islands. Part 2: New records of fishes from the Maldiv Islands, with notes on other species. *Ichthyological Bulletin of the J.L.B Smith Institute of Ichthyology* 67:20-32.
- Attwood, C.G. and B.A. Bennett
 1994. Variation in dispersal of galjoen (*Coracinus capensis*) (Teleostei: Coracinae) from a marine reserve. *Canadian Journal of Fisheries and Aquatic Sciences* 51:1247-1257.
- Bannerot, S., W.W. Fox Jr., and J.E. Powers
 1987. Reproductive strategies and the management of snappers and groupers. Pages 561-603 in J.J. Polovina and S. Ralston, eds. *Tropical snappers and groupers: Biology and fisheries management*. Westview Press Inc., Boulder, Colorado.
- Bohnsack, J.A.
 1982. Effects of piscivorous predator removal on coral reef fish community structure. Pages 258-267 in G.M. Cailliet and C.A. Simenstad (eds) *Gutshop '81: Fish food habits studies*. Wash. Sea Grant Publ., Seattle, Washington.
- Carter, J., F.J. Marrow, and V. Pryor
 1994. Aspects of the ecology and reproduction of Nassau grouper, *Epinephelus striatus*, off the coast of Belize, Central America. *Proceedings of the Gulf and Caribbean Fisheries Institute* 43:64-110.
- Coleman, F.C., C.C. Koenig, and L.A. Colins
 1996. Reproductive styles of shallow-water groupers (Pisces: Serranidae) in the eastern Gulf of Mexico and the consequences of fishing spawning aggregations. *Environmental Biology of Fishes* 47:129-141.
- Colin, P.L.
 1992. Reproduction of the Nassau grouper *Epinephelus striatus* (Pisces: Serranidae) and its relationship to environmental conditions. *Environmental Biology of Fishes* 34:357-377.

- Domeier, M.L. and P.L. Collin
1997. Tropical reef fish spawning aggregations: Defined and reviewed. *Bulletin of Marine Science* 60:698-726.
- Dugan, J.E. and G.E. Davis.
1993. Applications of marine refugia to coastal fisheries management. *Canadian Journal of Fisheries and Aquatic Sciences* 50:2029-2042.
- Goeden, G.B.
1978. A monograph of the coral trout *Plectropomus leopardus* (Lacepede). *Queensland Fisheries Service Research Bulletin* 1:1-42.
1982. Intensive fishing and a 'keystone' predator species: ingredients for community instability. *Biological Conservation* 22:273-281.
- Great Barrier Reef Marine Park Authority (GBRMPA).
1978. Great Barrier Reef Marine Park Authority workshop on reef fish assessment and monitoring. Workshop Series No. 2 GBRMPA, Townsville, Australia.
- Hudson, E. and G. Mace.
1996. Marine fish and the IUCN Red List of Threatened Animals. Report of the workshop held in collaboration with WWF and IUCN at the Zoological Society of London from April 29th-May 1st, 1996. 26pp.
- Huntsman, G.R. and W.E. Schaaf.
1994. Simulation of the impact of fishing on reproduction of a protogynous grouper, the graysby. *North American Journal of Fisheries Management* 14:41-52.
- Johannes, R.E.
1988. Spawning aggregation of the grouper, *Plectropomus areolatus* (Ruppel) in the Solomon Islands. *Proceedings of the 6th International Coral Reef Symposium* 2:751-755.
- Johannes, R.E. and M. Riepen.
1995. Environmental, Economic, and Social Implications of the Live Reef Fish Trade in Asia and the Western Pacific. The Nature Conservancy and the South Pacific Forum Fisheries Agency.
- Johannes, R.E., L. Squire, T. Graham, H. Renguul, and A. Bukurrou.
1995. Palau grouper spawning aggregation research project. 1995 Progress Report, South Pacific Forum Fisheries Agency, Honiara, Solomon Islands.
- Kingsford, M.J.
1992. Spatial and temporal variation in predation on reef fishes by coral trout (*Plectropomus leopardus*, Serranidae). *Coral Reefs* 11:193-198.
- Koenig, C.C., F.C. Coleman, L.A. Collins, Y. Sadovy, and P.L. Colin.
1996. Reproduction in gag (*Mycteroperca microlepis*) (Pisces: Serranidae) in the Eastern Gulf of Mexico and the consequences of fishing spawning aggregations. Pages 307-323 In: F. Arrequin-Sanchez, J.L. Munro, M.C. Balgos and D. Pauly (Eds.). *Biology, Fisheries and Culture of Tropical Groupers and Snappers*. ICLARM Conference Proceedings 48, 449p.

Maniku, M.H.

1994. The status of coral reef resource systems and current research needs in the Maldives. Pages 25-27 In: Munro, J.L. and P.E. Munro (Eds.). The management of coral reef resource systems. ICLARM Conf. Proc. 44. 124pp.

Manooch, C.S., III.

1987. Age and growth of snappers and groupers. Pages 329-373 In J.J. Polovina and S. Ralston (Eds.). Tropical snappers and groupers: Biology and fisheries management. Westview Press Inc., Boulder.

Newman, S.J., D.McB. Williams, and G.R. Russ.

1997. Patterns of zonation of assemblages of the Lutjanidae, Lethrinidae and Serranidae (Epinephelinae) within and among mid-shelf and outer-shelf reefs in the central Great Barrier Reef. *Marine and Freshwater Research* 48:119-128.

Olsen, D.A. and J.A. LaPlace.

1978. A study of a Virgin Island grouper fishery based on a breeding aggregation. *Proceedings of the Gulf and Caribbean Fisheries Institute* 31:130-144.

Plan Development Team (PDT).

1990. The potential of marine fishery reserves for reef fish management in the U.S. Southern Atlantic. *NOAA Technical Memorandum NMFS-SEFC-261*, 40 pp.

Randall, J.E.

1967. Food habits of reef fishes of the West Indies. *Studies in Tropical Oceanography* 5:665-847.

Randall, J.E. and R.C. Anderson.

1993. Annotated checklist of the epipelagic and shorefishes of the Maldivian Islands. Ichthy. *Bulletin of the J.L.B. Smith Institute of Ichthyology* 59:1-47.

Randall, J.E. and V.E. Brock.

1960. Observations on the ecology of Epinepheline and Lutjanid fishes of the Society Islands, with emphasis on food habits. *Transactions of the American Fisheries Society* 89:9-16.

Render, J.H. and C.A. Wilson.

1996. Effect of gas bladder deflation on mortality of hook-and-line caught and released red snappers: Implications for management. Pages 244-253 In: F. Arrequin-Sanchez, J.L. Munro, M.C. Balgos and D. Pauly (Eds.). Biology, Fisheries and Culture of Tropical Groupers and Snappers. ICLARM Conference Proceedings 48, 449pp.

Ricker, W.E.

1981. Changes in the average size and average age of Pacific salmon. *Canadian Journal of Fisheries and Aquatic Sciences* 38:1636-1656.

Roberts, C.M. and N.V.C. Polunin.

1991. Are marine reserves effective in management of reef fisheries? *Reviews of Fish Biology and Fisheries* 1:65-91.

- Rowley, R.J.
1994. Marine reserves in fisheries management. *Aquatic Conservation: Marine and Freshwater Ecosystems* 4:233-254.
- Russ, G.
1985. Effects of protective management on coral reef fishes in the central Philippines. *Proceedings of the 5th International Coral Reef Symposium* 4:219-224
- Russ, G.R. and A.C. Alcala.
1989. Effects of intense fishing pressure on an assemblage of coral reef fishes. *Marine Ecology Progress Series* 56:13-27.
- Russ, G.R., A.C. Alcala, and A.S. Cabanban.
1993. Marine reserves and fisheries management on coral reefs with preliminary modeling of the effects on yield per recruit. *Proceedings of the 7th International Coral Reef Symposium* 2:988-995.
- Sadovy, Y.
1994. Grouper stocks of the Western Central Atlantic: The need for management and management needs. *Proceedings of the Gulf and Caribbean Fisheries Institute* 43:43-64.
- Sale, P.F. (Ed.).
1991. The ecology of fishes on coral reefs. Academic Press, Inc., New York.
- Samoilys, M.A.
1997. Periodicity of spawning aggregations of coral trout *Plectropomus leopardus* (Pisces: Serranidae) on the northern Great Barrier Reef. *Marine Ecology Progress Series* 160:149-159.
- Samoilys, M.A. and L.C. Squire.
1994. Preliminary observations on the spawning behavior of coral trout, *Plectropomus leopardus* (Pisces: Serranidae), on the Great Barrier Reef. *Bulletin of Marine Science* 54:332-342.
- Shakeel, H.
1994a. Grouper fishery: benefits, threats and challenges. *Rasain* 14:183-196.
1994b. Study of grouper fishery and live grouper holding operations in the Maldives. Unpublished report. Marine Research Section, Ministry of Fisheries and Agriculture, Male', Maldives. 53pp.
- Shakeel, H. and H. Ahmed.
1996. Exploitation of reef resources: grouper and other food fishes. Workshop on Integrated Reef Resources Management, Ministry of Fisheries and Agriculture, Male', Republic of Maldives. 16 pp.
- Shapiro, D.Y.
1987. Reproduction in groupers. Pages 295-327 In: J.J. Polovina and S. Ralston, (Eds.). *Tropical snappers and groupers: Biology and fisheries management*. Westview Press Inc., Boulder, Colorado.
- Sheridan, A.K.
1995. The genetic impacts of human activities on wild fish populations. *Reviews in Fisheries Science* 3:91-108.

Sluka, R.D.

1998. The biology and ecology of grouper in Laamu Atoll, Republic of Maldives. Oceanographic Society of Maldives, Male', Republic of Maldives.
- 2001a. Grouper and Napoleon wrasse ecology in Laamu Atoll, Republic of Maldives: Part 2. Timing, location, and characteristics of spawning aggregations. *Atoll Research Bulletin*
- 2001b. Grouper and Napoleon wrasse ecology in Laamu Atoll, Republic of Maldives: Part 1. Habitat, behavior, and movement patterns. *Atoll Research Bulletin*

Sluka, R. and N. Reichenbach.

1996. Grouper density and diversity at two sites in the Republic of Maldives. *Atoll Research Bulletin* No. 438:16pp.

Sluka, R. and K.M. Sullivan.

1998. The influence of spearfishing on the density, size distribution, and species composition of groupers in the upper Florida Keys. *Fishery Bulletin* 96:388-392.

Sluka, R., M. Chiappone, K.M. Sullivan, and R. Wright.

1996. Habitat and Life in the Exuma Cays, the Bahamas: The status of groupers and coral reefs in the northern cays. Media Publishing Ltd., Nassau. 83pp.
1997. The benefits of marine fishery reserve status for Nassau grouper *Epinephelus striatus* in the central Bahamas. *Proceedings of the 8th International Coral Reef Symposium* 2:1961-1964.

Turnbull, C.T. and M.A. Samoilys.

1997. Effectiveness of spawning closures in managing the line fishery on the Great Barrier Reef. Report to the Reef Fish Management Advisory Committee (REEFMAC) of the Queensland Fisheries Management Authority, Queensland, Australia. 28pp.

Watson, M. and R.F.G. Ormond.

1994. Effect of an artisanal fishery on the fish and urchin populations of a Kenyan coral reef. *Marine Ecology Progress Series* 109:115-129.

Wilson, R.R., Jr. and K.M. Burns.

1996. Potential survival of released groupers caught deeper than 40 m based on shipboard and in-situ observations, and tag-recapture data. *Bulletin of Marine Science* 58:234-247.

Zeller, D.C.

1997. Home range and activity patterns of the coral trout *Plectropomus leopardus* (Serranidae). *Marine Ecology Progress Series* 154:65-77.